

Take the road less traveled

River GALLERY

from Folk Art to Fine Art



March — April 2021

Located on the historic Independence riverfront, River Gallery has been a destination for art lovers since 1998. A cooperative run by 13 partners, our focus has always been to provide a venue for the incredible number of talented Oregon artists we have encountered.

Focus on the Window — Gerry Brehm

In his ceramic work Gerry uses earthy tones with a small amount of bright colors to accent the whole piece. His pieces are very sculptural.

“I enjoy creating human and animal figures in clay and try to make them have a feeling of movement. Looking at the whole sculpture there should be a sense of wonder and placement.”

He feels that every new step in his craft is a development of his character. With an enduring interest in figurative sculpture, he looks for positive images and/or an introspective feeling to enhance the hand-crafted figurines. These sculptures and Gerry’s functional ware interact with texture and color to enhance but not to overwhelm the high fire stoneware clay.

Gerry has been president of the Willamette Ceramic Guild for four years. He is a two-year working member of Artist Cooperative and is currently a member of The River Gallery in Independence. ≈

River Gallery email — rivergallery97351@gmail.com

184 S. Main Street, Independence, Oregon 97351 — 503-838-6171

Gallery hours — Friday and Saturday, 12 noon – 4pm

www.rivergalleryart.com

on Facebook at www.facebook.com/River-Gallery-120341084691093/

Featured member artist — Carol Chapel

In this series of drawings and paintings Carol uses hand dyed paper using the plants that were abundant during each season. The drawings are of the plants (mostly) that were apparent at that time. They are not necessarily the same plants.

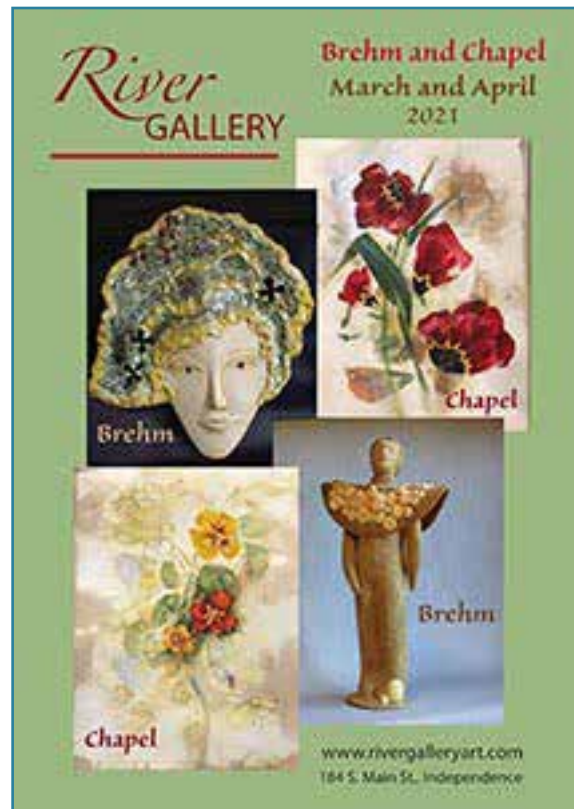
“When I started this series of drawings I had no idea that it would parallel a World Wide pandemic. My intent was to do some drawings during each of the four seasons. And I did.”

Carol attended the University of Wichita as a painting major and printmaking minor in the College of Fine Art.

She moved from Kansas to California then Oregon. The Corvallis area has been her home since 1972.

Carol presently lives with her husband, Harry Lehman, in rural Benton County where they have sheep, border collies and a garden. Her studio is on their property.

Finally, Carol is a full time painter and printmaker. ≈





New Work

River Gallery is pleased to now include wood boxes by Paul Szudzik of Salem. Paul's boxes are finely designed and crafted using many varieties of wood. Come by and see them soon! ≈



Great News!!!

We are excited to tell you that we will be expanding our gallery hours in April. Beginning April 1, we will be open Thursday through Sunday from 12 noon to 4pm.

We have missed you, our friends and patrons, this past year. Thank you to those who have managed to come in the gallery when you can. Thanks to the care and concern of you and our members using masks and hand cleaners we have had no incidents of Covid. Many of us are now getting vaccinated and we are very pleased to be getting back to being open more hours.

We hope to expand the hours even further in May. For current gallery hours you can always check our website at rivergalleryart.com. ≈



"Hiking Weather" — Katy Vigeland



"Blue Fairy with Bubbles"
Louie Gizyn

Color the world

Symbolism of the Color Green

Welcome to spring! Well, almost. Of course green is the color for this season. We see green everywhere we go. — new growth. Green is the color of freshness, hope and renewal.

During post-classical and early modern Europe, green was the color commonly associated with wealth, merchants, bankers and the gentry, while red was reserved for the nobility. In surveys made in American, European, and Islamic countries, green is the color most commonly associated with nature, life, health, youth, spring, hope, and envy.

Source of Green

By far the largest contributor to green in nature is chlorophyll, the chemical by which plants photosynthesize and convert sunlight into chemical energy.

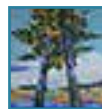
Several minerals provide pigments which have been used in green paints and dyes over the centuries. However, many of those substances were toxic or impermanent. Among the more notable green minerals is the emerald, which is colored green by trace amounts of chromium and sometimes vanadium. Chromium(III) oxide (Cr₂O₃), is called chrome green, also called viridian or institutional green when used as a pigment. Mixtures of oxidized cobalt and zinc were also used to create green paints as early as the 18th century.[35]

The Other Side of Green

Like other common colors, green has several completely opposite associations. While it is the color most associated by Europeans and Americans with good health, it is also the color most often associated with jealousy, toxicity and poison. There was a solid foundation for this association; in the nineteenth century several popular paints and pigments, notably verdigris, vert de Schweinfurt and vert de Paris, were highly toxic, containing copper or arsenic. ≈

Coming in May and June

River Gallery will feature painters:



Barbara Meyer



Chris Hannegan

In the window:



Anna Mallard



Ann Durley

River Gallery is a member of the
Mid-Willamette Valley Art Trail

